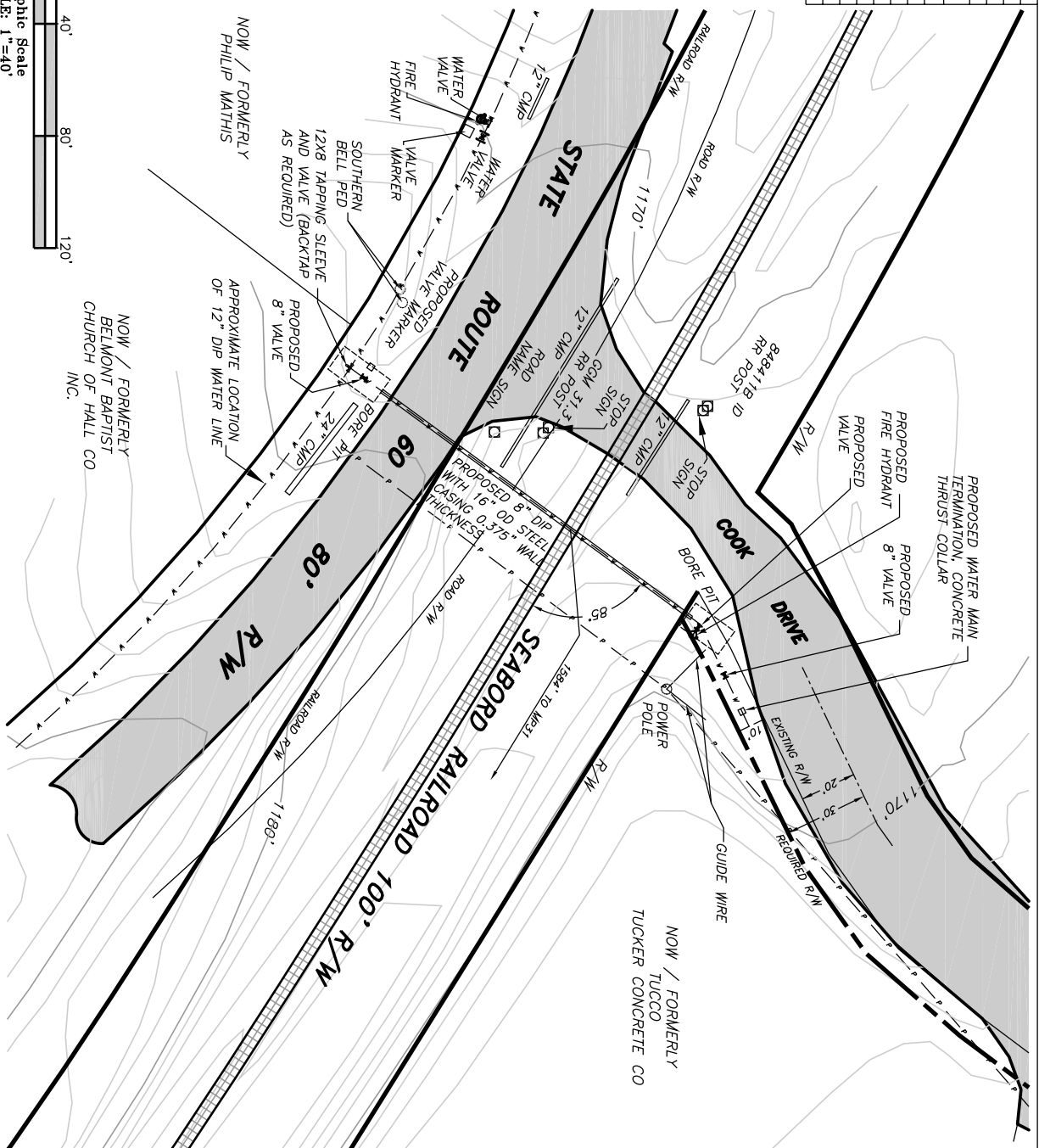
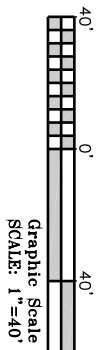
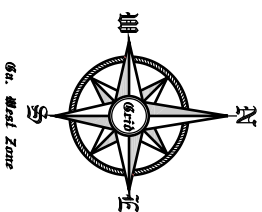


JOB NO.	260401
DRAWING NO.	260401
DATE:	4/13/06
SCALE:	1" = 40'
LOCATION:	
STATE	GEORGIA
COUNTY	HALL
CITY	GAINESVILLE
NEAREST R/R MILEPOST	31.3
DOI/YAR CROSSING NO.	84841B
LATITUDE:	34.1123.9°N
LONGITUDE:	83.469.0°W



OVERALL SITE PLAN

SHEET 2 of 8

### INDEX

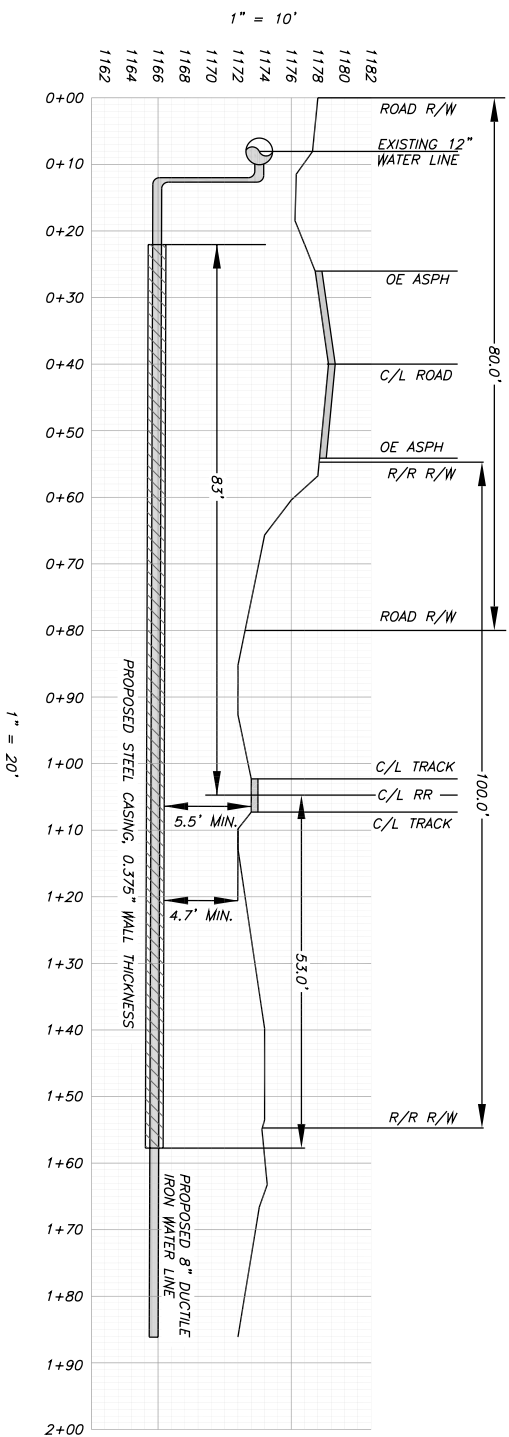
DESCRIPTION:	SHEET #
COVER	ONE (1)
OVERALL SITE PLAN	TWO (2)
BLOW UP OF R/R CROSSING	THREE (3)
RAILROAD NOTES:	FOUR (4)
RAILROAD NOTES/DETAILS	FIVE (5)
CITY OF GAINESVILLE NOTES/DETAILS	SIX (6)
CITY OF GAINESVILLE DETAILS:	SEVEN (7)
PROFILE	EIGHT (8)

### REVISION

DATE	DESCRIPTION

**DWIGHT KILBY, PLS**  
 4636 Woodlane Drive  
 Odessa, Georgia 30566  
 Phone: (770) 965-9700  
 www.TheKilbyGroup.com

JOB NO.	260401
DRAWING NO.	260401
DATE:	4/13/06
SCALE:	N/A
LOCATION:	
STATE	GEORGIA
COUNTY	HALL
CITY	GAINESVILLE
NEAREST R/R MILEPOST	31.3
DOI/ADR CROSSING NO.	848411B
LATITUDE:	34°11'23.9"N
LONGITUDE:	83°46'9.0"W



PROFILE

SHEET 8 of 8

INDEX

DESCRIPTION:	SHEET #
COVER	ONE (1)
OVERALL SITE PLAN	TWO (2)
BLOW UP OF R/R CROSSING	THREE (3)
RAILROAD NOTES:	FOUR (4)
RAILROAD NOTES/DETAILS	FIVE (5)
CITY OF GAINESVILLE NOTES/DETAILS	SIX (6)
CITY OF GAINESVILLE DETAILS:	SEVEN (7)
PROFILE	EIGHT (8)

REVISION	DATE	DESCRIPTION

**DWIGHT KILBY, PLS**  
 4636 Woodlane Drive  
 Okawood, Georgia 30566  
 Phone: (770) 965-9700  
 www.TheKilbyGroup.com